



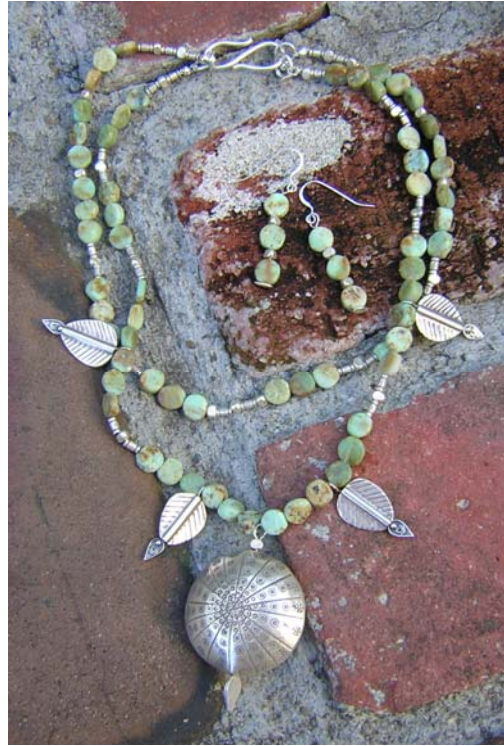
## A SPECIAL INVITATION!

Bay Area Renaissance Artist, Elizabeth Lynn Moon will shortly initiate her Original Art Jewelry design tour.

Valuing the intimacy of knowing her patrons, Ms. Moon has chosen evening and weekend home events as the ideal atmosphere to reveal these works of art to refined women and men of exceptional taste.

If you would like to host one of these upcoming events, and have a group of select friends you'd like to include for this reception, please contact Ms. Moon to discuss dates and details.

\*A private premier showing may be possible with advance notice.



*Elizabeth Lynn Moon*

Original Art Jewelry

Palo Alto, CA

Phone (650) 424-8237

[elm@elizabethlynnmoon.com](mailto:elm@elizabethlynnmoon.com)

[www.elizabethlynnmoon.com](http://www.elizabethlynnmoon.com)



# THE ARTIST'S HEART...

**California native and Bay Area artist Elizabeth Lynn Moon** lives her life to the fullest, for the good of all concerned; a credo that has enriched her life, along with the conviction that "If it is not exceptional, it is not acceptable".

Creativity is a life long expression for her, beginning at the tender age of five in church choir; the beginning of 17 years of harmonious choral expression and decades of creative expression.

Convinced that youth remains tangible through sequential careers and creative exploration, Ms. Moon has had numerous successful careers in vocal, aural and visual arts.

In recent years she has chosen jewelry as her media because she knows the joy of wearable art, and creates legacy treasures to be passed down through generations.



## THE STORY OF INTENTION...

We can live our life by the principles that guide us, and shape the world by our influence as we meet people, by how we treat people.

Imagine that like fairy dust, everything you touched carried with it your signature...an energy that expressed you.

And that by intention you could send energetic messages through things you touch and things created; like messages via telephone and internet.

Imagine that the artist chooses to include in her signature creations, energetic messages to wake up and recognize your divine beauty.

Experience the feeling you would have when wearing such a design, to have your shoulders draped in a magical energy that awakened you to your absolute highest good.

And further, that every person who saw the piece likewise was awakened to his or her inner beauty and highest good.

*What kind of world would we create?*

# ... AND CREATIONS

These one-of-a-kind creations span a wide range of styles - whimsical, serene, refined or classic. Each is an expression that integrates the elements of our glorious earth, expressed through semi-precious stones, quality metals, pearls, vintage glass, crystal and other intriguing materials from nature.

Once the elements have been collected, the dance begins that defines the rhythm of the piece; the pattern and repetition, like riffs and measures in a musical composition. Sometimes the design comes together in a few hours, often it may take weeks until the final pieces suddenly reveal the combination that makes her heart leap, and assembly can begin.

Artisanship and special attention to assembly ensures a piece that will last, and, equally important, one that expresses the artist's love of creativity, the glory of nature and the celebration of life in its many embracing expressions.

